

1 IF-810 or IF-811 Terminal (Slave)

Thank you for choosing an Interflex system. With an IF-810 or IF-811 terminal (slave), you have purchased a reliable device for capturing access data.

Furthermore, with an IF-811 terminal (slave), you can also enter your PIN via a membrane keypad.

Scope of delivery:

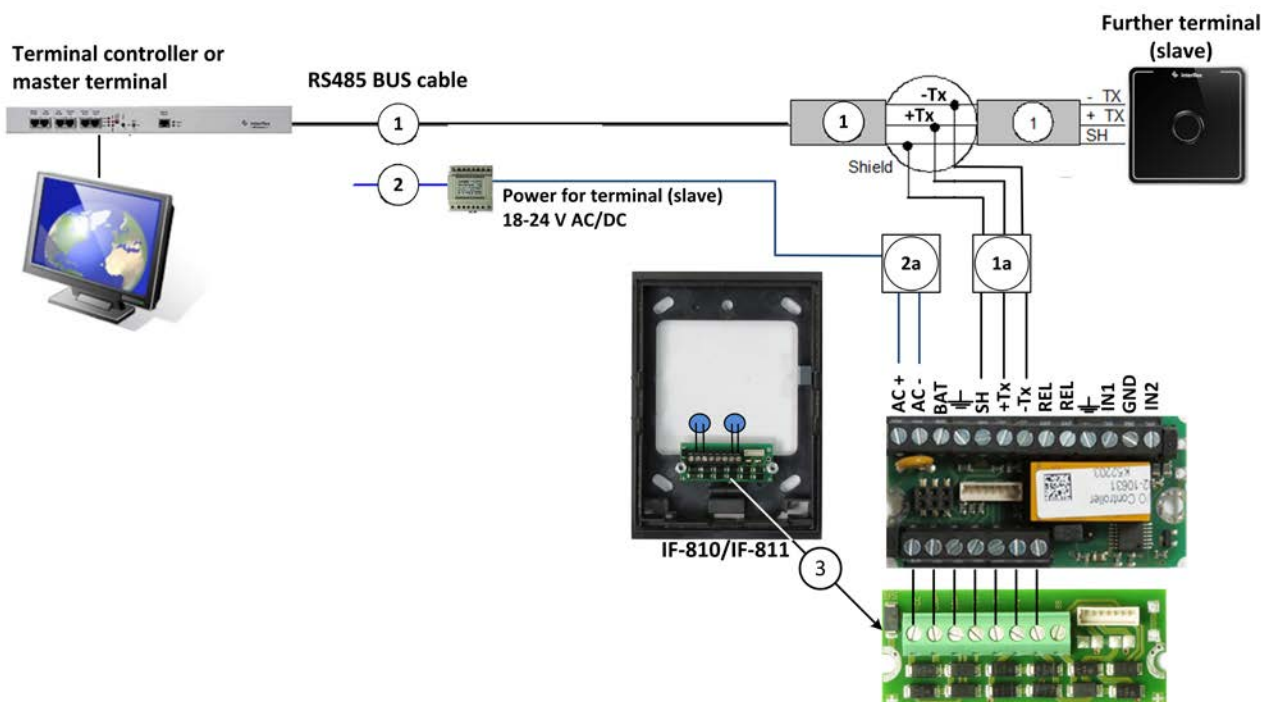
- IF-810 or IF-811 terminal (slave)
- Terminal strip board
- Mortise lock
- Material for wall mounting
- Please check the completeness and condition of the shipment upon receipt.



2 Intended Use

Slave terminals of the IF-810/IF-811 series are devices for capturing access data as well as for writing to RFID credentials. Furthermore, with an IF-811 terminal (slave), you can also enter your PIN. The device is designed for indoor and outdoor use (see note). Any other use is not in accordance with the intended purpose and is therefore not permitted.

3 Assembly and Installation



3.1 Cables and Cable Types

No.		Max. Length	Cable Cores
1	BUS cable from controller to terminal (slave) installed furthest away	1,200 m	4 x 2 x 0.6 mm ²
1a	Branch cable from bus to installation site of terminal (slave)	100 m	4 x 2 x 0.6 mm ²
2	110/ 230 V mains cable to transformer or DC power supply unit		
2a	Low voltage cable to terminal board (3)		4 x 2 x 0.6 mm ²

NOTE

We recommend:

- installing a separate, fuse-protected circuit.
- supplying operating voltage via a separate cable (2a) to avoid interference.
- keeping a minimum distance of 30 cm between the slave terminal and other systems with RFID readers.
- keeping a distance of 10 cm between connecting cables and power lines.

The following installation procedure has been proven and tested:

1. Install the cables.
2. Install the power supply.
3. Mount the back panel of the IF-810/IF-811. If the terminal is to be used for access control, an I/O controller board must also be mounted in a secured area.
4. Set the address.
5. Close the housing.
6. Put the IF-810/IF-811 into operation.

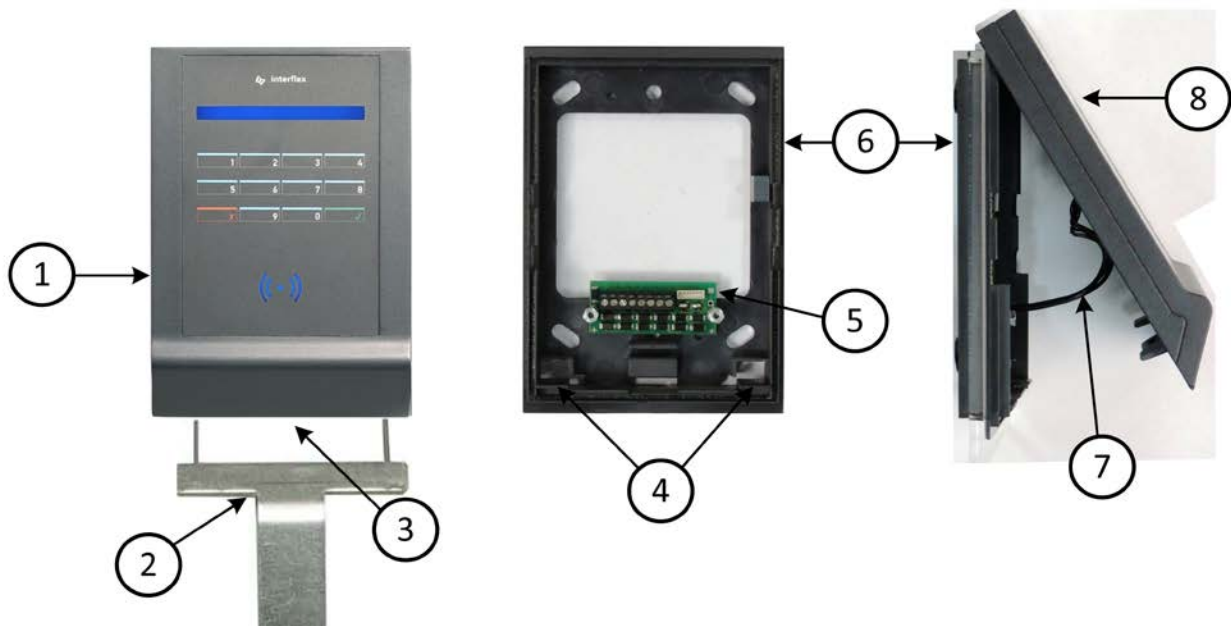
3.2 Shielded Cables

To guarantee trouble-free operation, we recommend the use of shielded cables.

Operation, however, is also possible with unshielded cables. Data transfer problems must be examined on a case-by-case basis. Where necessary, a shielded cable must be used for the corresponding devices.

3.3 Open/Close Housing

The back panel of the housing (6) and the housing cover (8) are held together with internal latches and secured with a mortise lock (3).



1	IF-810/IF-811 terminal (slave)	5	Terminal strip board
2	Tool for opening the IF-810/IF-811 terminal (order no. 50-10137)	6	Back panel of housing
3	Mortise lock	7	Connecting cable
4	Locking latches	8	Housing cover

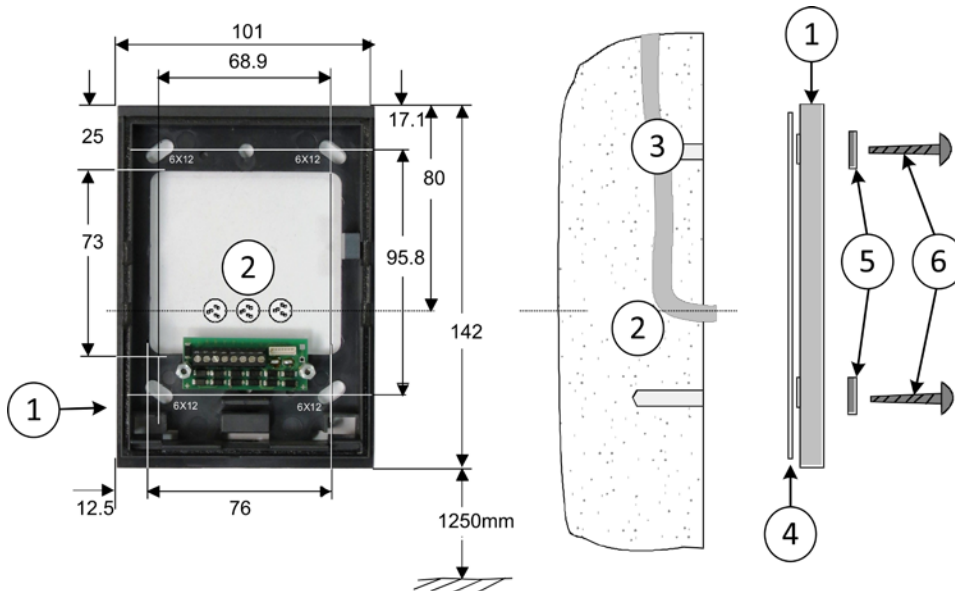
Open:

1. Unlock the mortise lock and pull it down and out.
2. Insert the pins of the tool (2) into the housing from the bottom and, by doing so, push open the two internal latches.
3. With the latches unlocked, swivel up the housing cover.
4. Disconnect the connecting cable and remove the housing cover.

Close:

1. Plug in the connecting cable at the respective board.
2. Tilt the housing cover and hook it onto the upper edge of the back panel of the housing.
3. Hinge down the housing cover until you hear the latches in the back panel of the housing lock into place.
4. Secure the housing by means of the mortise lock.

3.4 Mounting



1	Back panel of housing with terminal board	4	Rubber seal
2	Recommended cable feed: Flush-mounted	5	Plain washers
3	Installation cable	6	Fastening screws

NOTE

The back panel of the housing (1) must not warp when being screwed down.

The IF-810/IF-811 terminal (slave) can be installed in dry or humid environments (IP43). Installation is performed on flat walls or pillars, e.g. next to doors, using the materials included in delivery. The I/O board is installed in a secured area, e.g. into an installation box from Hensel or a DIN appliance case.

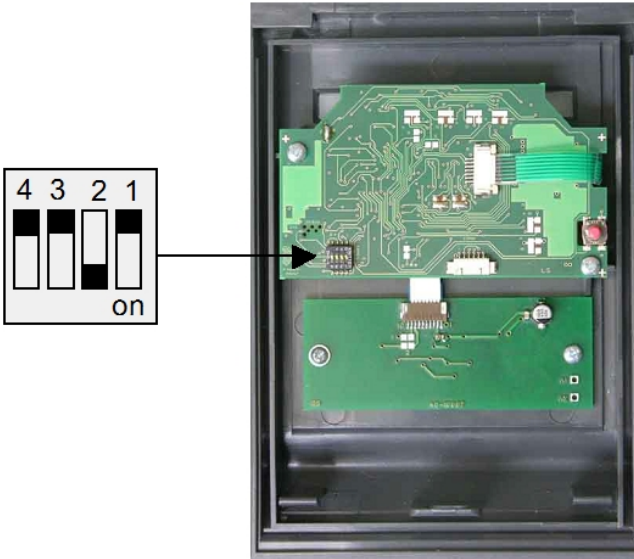
The sealant (4) used evens out unevenness in the wall and makes a seal to the wall. This sealant allows for installation in humid rooms.

If the mortise lock (IP54) is sealed, the device can be installed outdoors.

3.5 Hardware Address Setting

In order to specify the device address, up to 4 address switches must be set to the correct position on the MPU board.

- Before setting the switches, check the bus address range. Addresses may not be assigned twice.
- Set address 1 for the first slave terminal, address 2 for the second slave terminal, and so forth.
- For the connection to a master terminal, set address 2 for the first slave terminal, and so forth.



Switch	4	3	2	1
Address 1	OFF	OFF	OFF	OFF (not required if connected to a master terminal)
Address 2	OFF	OFF	OFF	ON
Address 3	OFF	OFF	ON	OFF
Address 4	OFF	OFF	ON	ON
Address 5	OFF	ON	OFF	OFF
Address 6	OFF	ON	OFF	ON
Address 7	OFF	ON	ON	OFF
Address 8	OFF	ON	ON	ON

3.6 Wiring

Power supply

Power can be supplied:

- via a 12 VAC - 24 VAC power transformer.
- via a 12 VAC - 24 VAC low-voltage power supply unit.
- via an IF-79 I/O BUS panel (max. 100 m).

Connecting the BUS cable

The IF-810/IF-811 terminal is connected to BUS1, BUS2 or BUS3 of a controller.

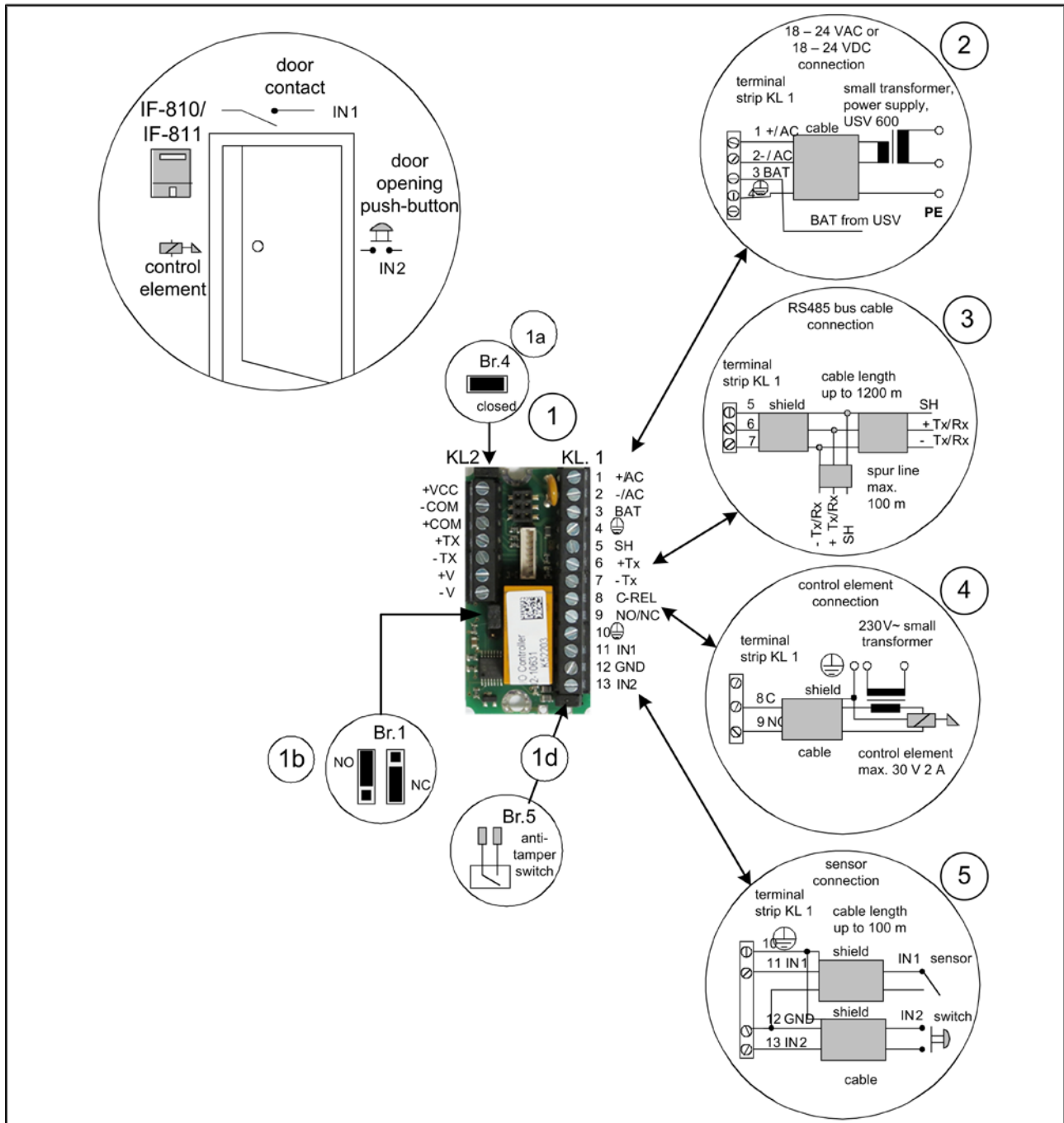
Connecting the I/O controller board

The I/O controller board is used for controlling electric actuators. If access control is not required, the I/O controller board can be omitted. In that case, connection takes place directly on the terminal board using a cable of up to 100 m length.

NOTE

The IF-810/IF-811 terminal requires functional grounding in order to comply with the EMC threshold values. The line shield is connected to terminal 8 (PE) on the terminal board as well as to terminal 4 or 10 on the I/O controller board.

3.7 Controlling Locking Devices with I/O Controller Board



1	I/O controller board (accessories)	2	Power supply connection
1a	Br. 4 jumper selection	3	Data cable connection
1b	Br.1 relay contact in NO or NC position	4	Connection of electric control element (door opener)
1d	Br.5 plug contact for anti-tamper switch	5	Connection of door sensor, handle or NC contact

NOTE

The I/O controller board allows for access control. The board can switch electric door openers up to max. 30 V 2 A via an NO or NC contact. It must be separated from the IF-810/IF-811 terminal and installed in a secured area, e.g. in a Hensel installation box (no. 78-700-0146) or a DIN appliance case. In order to prevent malfunction and manipulation, the I/O controller board may **not** be installed in the housing of an IF-810 or IF-811 terminal.

3.7.1 Circuit Examples

Power supply (2)

The IF-810/IF-811 terminal can be supplied with 18-24 V AC/DC via the I/O controller board.

Connection of RS485 data cable (3)

The RS485 data cable is connected to terminals 5, 6 and 7. The data cable may have a max. length of 1200 m. If a spur line is connected to the data line, the length of the spur line may not exceed 100 m.

Connection of a control element (4)

An actuator, shown as a door opener in the figure, is connected to terminals 8 and 9. The actuator is controlled by the relay of the I/O controller board and can switch a maximum of 30 V and 2 A. Via the bridge (1b), the relay contact can be changed from normally open (NO) to normally closed (NC). If two relay outputs are required, a further I/O controller board is needed.

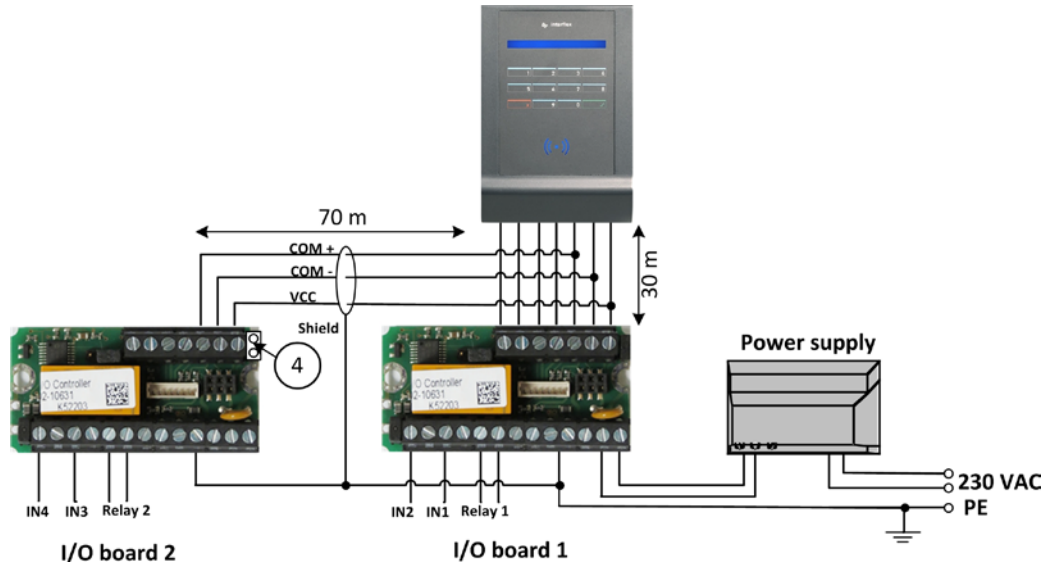
Connection of sensors (5)

Two sensors can be connected to the I/O controller board. Usually, one door contact and one door opener are connected. If more than two sensors are required, a further I/O controller board is needed. The bridge (BR4) must then be removed on the second I/O controller board.

NOTE

To avoid interferences, use shielded cables for the connection between the I/O controller boards and the terminal.

3.8 Connecting two I/O controller boards



3.9

I/O board 2

I/O board 1

For technical reasons, the total length of the COM cable is limited to 100 m. The length of the COM cable is to be reduced as in the example to ensure that a total length of 100 m is not exceeded. The bridge (4) on I/O controller board 2 must be removed.

4 Accessories

The following components can be ordered as accessories:

- I/O controller board, order number: 75-700-0141
- Power transformer PSU 230 / 20 VAC 1.5 A, order number: 41-10106
- Release lever for housing, order number: 50-10137)

5 Technical Specifications

Power Supply	
Low-voltage	12-24 V AC / DC (measured directly at the terminal)
Power consumption	Max. 4 VA
Protection	Protection via PTC resistor
Interfaces	
Interface to parent devices	RS485, 9600/ 19200 baud (automatic configuration)
Reader	LEGIC or Mifare / Proxif (depending on the order)
Read range	Up to 50 mm, depending on the reader type
Inputs for sensors (optional)	2 (4 with 2 I/O controller boards)
Output relay (optional)	1 (2 with 2 I/O controller boards)
Switching power	30 V, 2 A
User information	Luminous bar with LEDs (blue, green, red)
Data entry	As opposed to IF-811, the IF-810 terminal is not equipped with a keypad. The IF-811 terminal is equipped with a numeric membrane keypad.
Device Protection	
Protection category	III
Degree of protection	IP43 (IP54 after sealing the mortise lock)
General Data	
Ambient temperature	-25°C to +55°C
Humidity	Max. 95%, non-condensing
Product safety	EN 60950-1
Compatibility (EMC)	EN 300330-1/2, EN 301489-1/3, CE
Dimensions (H x W x D)	150 x 105 x 42 mm
Weight	Approx. 0.4 kg
Housing material	Plastic
Installation type	Surface mounting
Cable feed	Flush-mounted

6 Disposal



Once its service life comes to an end, the device must be disposed of properly as electronic waste. The owner can dispose of the device himself or return it to the supplier.

Copyright © 2016

Version Date: October 31, 2016

Interflex Datensysteme GmbH

Zettachring 16, D-70567 Stuttgart, Germany

Internet E-Mail: interflex.info@allegion.com

Tel.: +49 (0711) 1322 0

Websites: www.interflex.de www.allegion.com