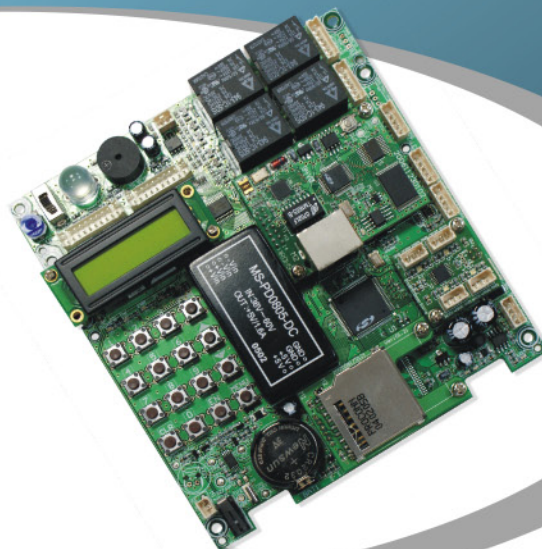


SY210NT-V5 Controller



Controller



PCB

Feature

- Advanced programmable functions for different level within groups to maximize management control.
- Support multiple proximity, keypad, biometrics, smart card and RS485/Wiegand reader.
- Versatile software features support wide range functions.
- Capability of connecting external backup power supply for emergency.
- Can be off-line use or on-line use.
- Externally programmable interface.
- RS485 interface connection to link up to 99 units on a single Network up to 1Km long.

Specifications:

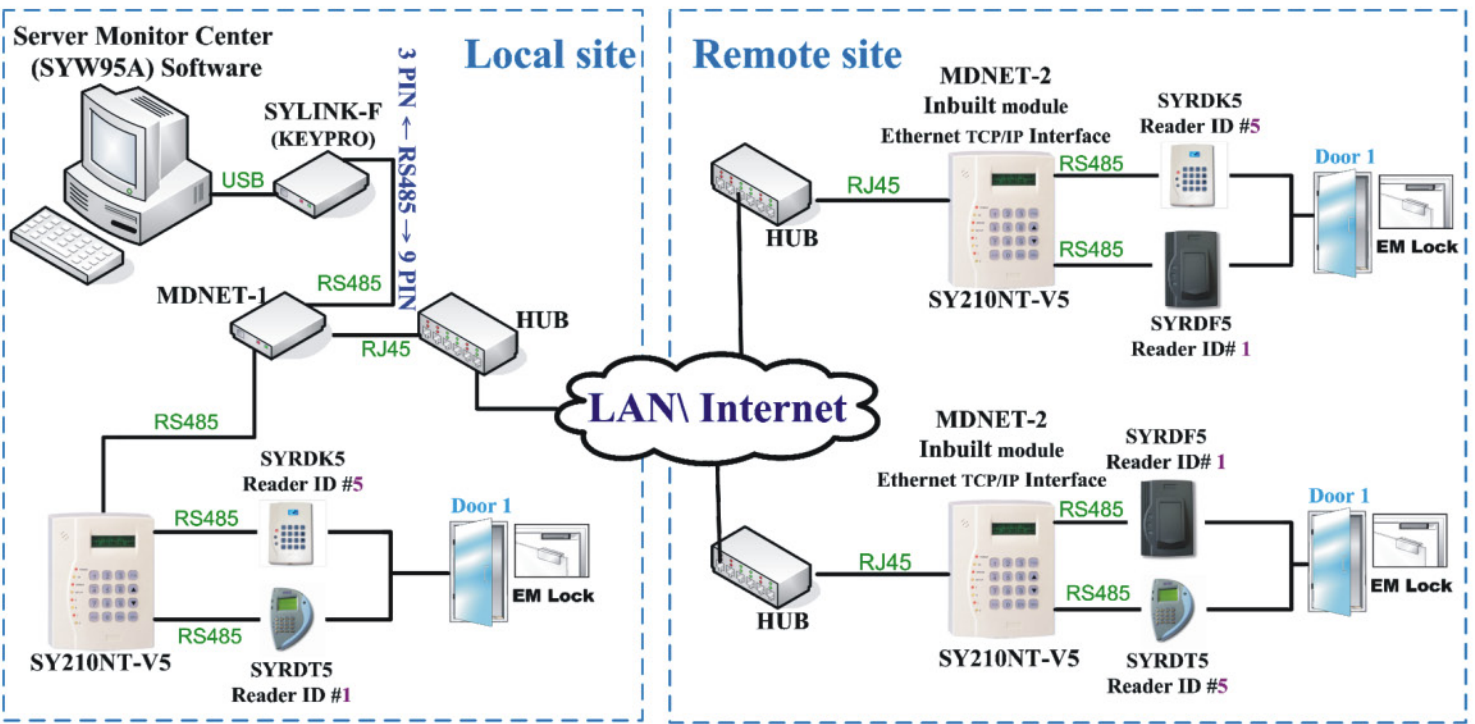
Specs / Item	SY210NT2 OSB/TSB/TSA	SY210NT4 FSB/SSB/SSA
Door control	2 doors	4 doors
Number of readers	4(2 In/2 Out)	8(4 In / 4 Out)
Capacity of records	4,200 records	
Number of cards	9,999 cards	
Communication ports	RS485x2 + Wiegand	
Relay output	2 relays	4 relays
Input points	Normally 4 data	
Buad rate	19,200bps (4,800~115,200bps)	
Time / Time zone	32 timer / 60 time zone	
Group and APP Set / Holidays	64 group / 366 holidays	
Controller ID	01~99(SYW95A) / 0001~9999(SYSOFT-95A)	
Anti-passback	Up to 3 level of local control or group Anti-passback (through the site)	
LCD display	16 X 2 character	
Keypad	16 Keys	
Indicator	8 LED	
Speaker output	Built-in (max 0.5 W)	
Operating TEMP.	-20°C~70°C	
Storage TEMP.	-40°C~80°C	
Power supply	8V~24V DC / 0.3~3W	
Dimensions (mm)	122.5W x 134H x 25D (PCB) 137W x 180H x 54D (Controller)	

Ordering Information

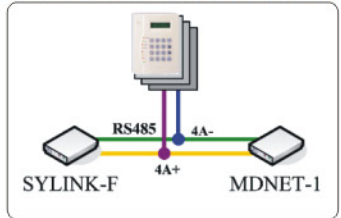
Item	Type
SY210NT2-OSB-V5	2 Door controller(PCB)-21,000
SY210NT2-TSB-V5	2 Door controller(LCM case)-21,000
SY210NT4-FSB-V5	4 Door controller(PCB)-21,000
SY210NT4-SSB-V5	4 Door controller(LCM case)-21,000
SY210NT2-TSA-V5	2 Door controller(LCM case)-63,000
SY210NT4-SSA-V5	4 Door controller(LCM case)-63,000

SYW95A TCP/IP Network Diagram

SY210NT-V5

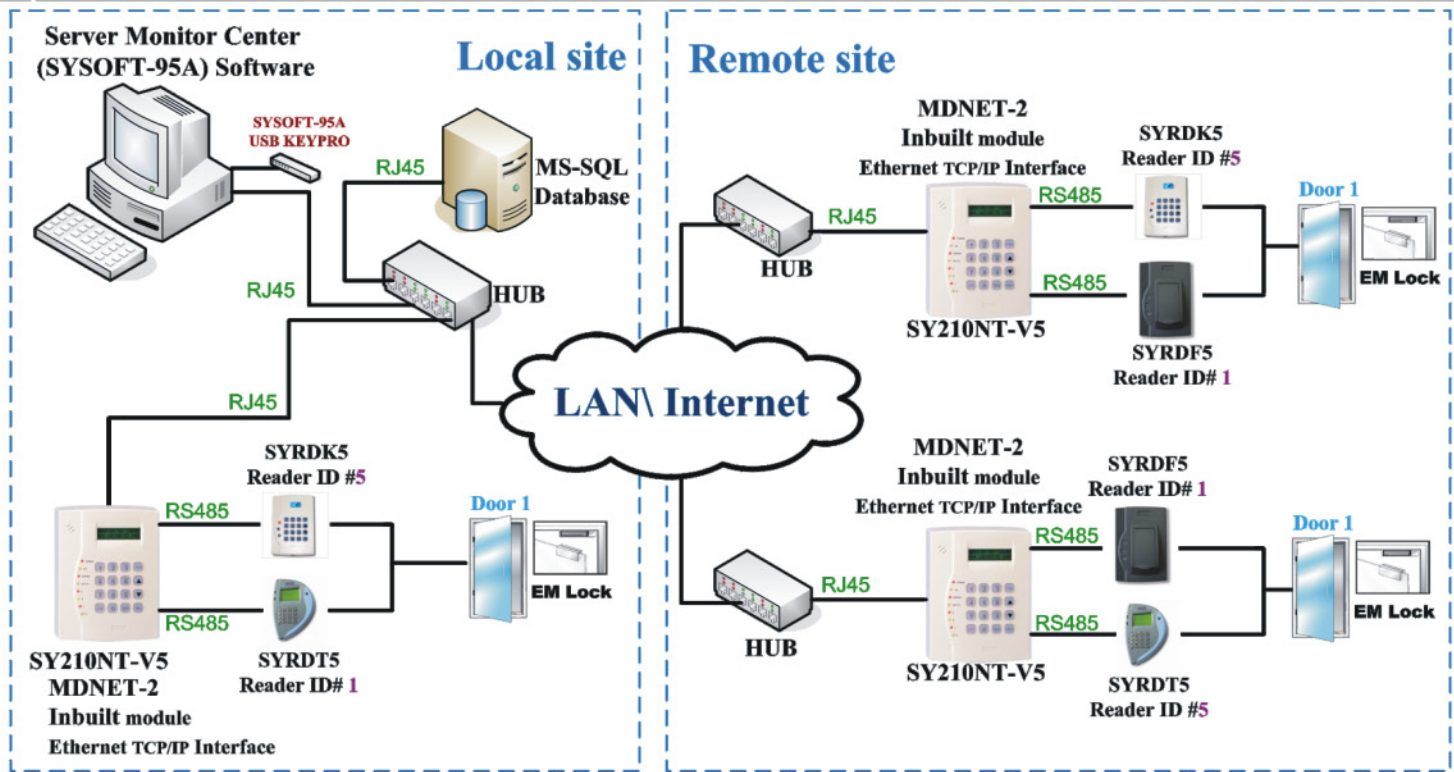


©With this kind of connection, the total controller can be connected up to 99 unit ◦



SYSOFT-95A TCP/IP Network Diagram

SY210NT-V5



©With this kind of connection, the total controller can be connected up to 9,999 unit ◦