



**Leverage the Power of
Integration and Minimize Risk**

Gain Control, Minimize Risk with a Comprehensive Solution

Every day, your business faces risks and challenges beyond your control. Honeywell Fire and Life Safety Solutions are one of the best ways to minimize business risks and help ensure safety for your company's people and property. No other company provides a more complete or integrated solution.

The innovative professionals at Honeywell were the first to introduce integrated fire and HVAC systems in 1972, bringing together information from different subsystems for more unified and efficient building control. We remain the integration leader with the industry's broadest portfolio of security and life safety products and solutions.

In fact, Honeywell recently received a U.S. patent for SMART (System Maintenance Analysis Reporting Tool) — a brand new invention to the industry. The Honeywell

XLS300 is the first fire panel to feature SMART, which gives you the capability to monitor the inspection frequency of your fire alarm system so that NFPA 72 requirements are met.

Protect Your Investment and Grow Affordably: Versatile, Scalable Technology

Honeywell Fire and Life Safety Solutions are advanced networked applications with a modular architecture, designed to adapt to your changing needs. Our versatile solutions allow the use of a common network and are scalable to virtually any size facility and system configuration — whether you oversee the safety and protection of a school or industrial facility from a single PC, or monitor a large, globally-integrated network for commercial or government facilities.

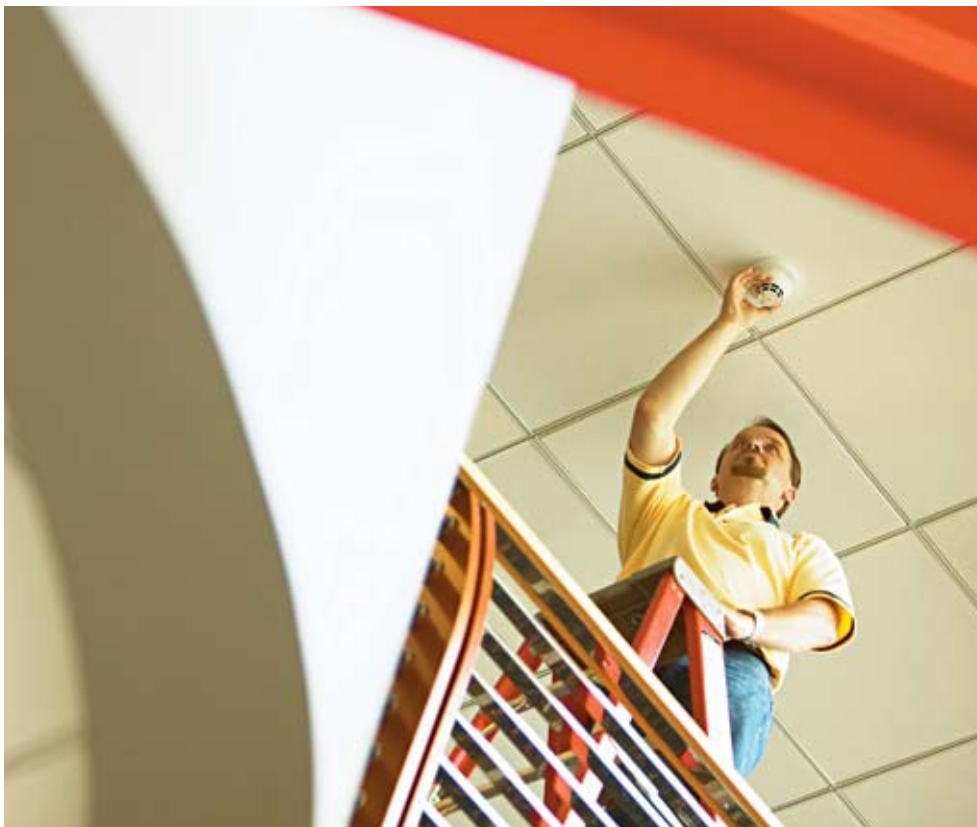
You can depend on your Honeywell system to provide reliable protection of your assets and occupants. Our technology incorporates robust system redundancy and a distributed

server architecture (DSA) to help ensure maximum uptime and productivity while reducing your business risk.

Only Honeywell Fire and Life Safety Solutions are equipped to operate on an Ethernet LAN, ensuring compatibility with existing building systems and eliminating the need for costly and time-consuming rewiring at installation. Our systems grow to meet your changing needs, delivering value that endures.

Simplify Building Operations: Integrated, Single-Point Control

Honeywell offers you the exclusive benefits of a fully integrated fire and security platform for more comprehensive protection. Our engineers and technicians, certified by the National Society of Professional Engineers, know how to bring your building and automation systems together for single-point system control, reducing operator training time and simplifying system operation.



Honeywell Fire and Life Safety Solutions include:

- Life safety system installation, maintenance and retrofitting
- Fire and smoke detection and alarm
- Emergency communication controls and networks
- Fire, security and HVAC systems integration
- Emergency preparedness planning
- Building automation
- Critical process control
- Video-based event analysis
- Smoke management

Honeywell can custom design, install, integrate, maintain and monitor virtually all of your building systems for an unsurpassed level of protection.



Only Honeywell offers smoke detectors precise enough for high-sensitivity applications and rugged enough for harsh environments.

Honeywell Enterprise Buildings Integrator™: Optimize Building Efficiency through Building Automation

The Honeywell Enterprise Buildings Integrator™ (EBI) offers a total solution for comprehensive automation for all of your building systems — without starting over. It can be customized to the needs of virtually any application and building.

This scalable system pulls together all core building systems and integrates information from many different enterprise subsystems, including fire and life safety systems. Its powerful software applications include Honeywell Energy Manager™, LifeSafety Manager™, Building Manager™, Security Manager™, Asset Locator™ and Digital Video Manager.

Honeywell fire and life safety solutions offer fingertip control of all your building, fire and security functions, right from your workstation. We take building automation beyond the traditional boundaries by integrating:

- HVAC systems
- Utility monitoring
- Lighting solutions
- Security systems
- Life safety systems
- Enterprise subsystems, including financial and personnel records, environmental controls and data warehouses

Advanced Detection for Challenging Environments

The harshest or most critical interior environments are no match for Honeywell fire and smoke sensors. Whether your environment is an airport, hospital, manufacturing facility or processing plant, only Honeywell has a solution so advanced that you no longer need to compromise

sensitivity levels to reduce nuisance alarms — and protect your people and property.

Honeywell fire and smoke sensors can even adjust to your environment and differentiate between normal and dangerous conditions, providing an early and rapid response that helps prevent property loss and minimize secondary damage from water sprinklers. Our broad range of advanced detection solutions includes:

- **Acclimate®**: Multi-criteria, intelligent sensors
- **Eclipse™**: Peer-to-peer split communication protocol smoke detectors
- **Filtrex®**: Harsh-environment smoke detectors
- **Pinnacle™**: High-sensitivity, laser technology smoke detectors
- **Projected Beam**: Smoke detectors for large-area applications

Honeywell LifeSafety Manager is an application of EBI. It provides primary monitoring and full control of a building's key life safety systems, including smoke and fire detection, sprinkler supervisory and emergency communications systems. It also features:

- Event information
- Response prompting
- Tracking capabilities
- Advanced reporting tools
- Emergency messaging to pagers, cell phones and e-mail

The Honeywell Three-Way Service Advantage

Global Service Response Center

Honeywell leverages technology and the innovation of our people to maximize efficiency for our customers and ourselves. Your advantage begins with the Honeywell Global Service Response Center (GSRC) in Atlanta, our national centralized dispatching center. The GSRC is staffed 24/7 by trained building service professionals who provide an unmatched level of dedicated, consistent service to thousands of customer sites in North America.

Your "FAST" Field Advantage

Expect fast, knowledgeable service from Honeywell field technicians. These certified professionals work with the latest programming, engineering and diagnostic tools and our extensive, 20-year database of the equipment that we maintain. Field technicians use handheld computers

equipped with Honeywell Field Automation Service Technology (FAST). The FAST units dramatically speed the dispatching and service process once your systems are in our care.

ServicePortal™

For convenient, online access to your service records, turn to the Honeywell ServicePortal™ application. Customers use ServicePortal to place online service requests and access work orders, service histories and service contract details any time. Convenient access to comprehensive electronic building information is a powerful advantage that helps facilities reduce paperwork and plan ahead.

Honeywell Enterprise Buildings Integrator™, LifeSafety Manager™, Building Manager™, Asset Locator™, Digital Video Manager, ServicePortal™, and Honeywell Field Service Automation Technology are trademarks of Honeywell International Inc. All other brands are trademarks of their respective companies.

Find out more

To learn more about Honeywell Fire and Life Safety Solutions call 1-800-345-6770, ext. 603. Or e-mail building.solutions@honeywell.com

Honeywell Building Solutions

Honeywell
1985 Douglas Drive North
Golden Valley, MN 55422-3992
1-800-345-6770, ext. 603
Outside North America: +1-480-592-3248
www.honeywell.com

SL-53-1058
April 2007
© 2007 Honeywell International Inc.

Honeywell